

RECEIVED
MAR 14 2017



Residential
Commercial
ALTA

PLAT OF SURVEY

Studnicka and Associates, Ltd.

Topographical
Condominium
Site Plans

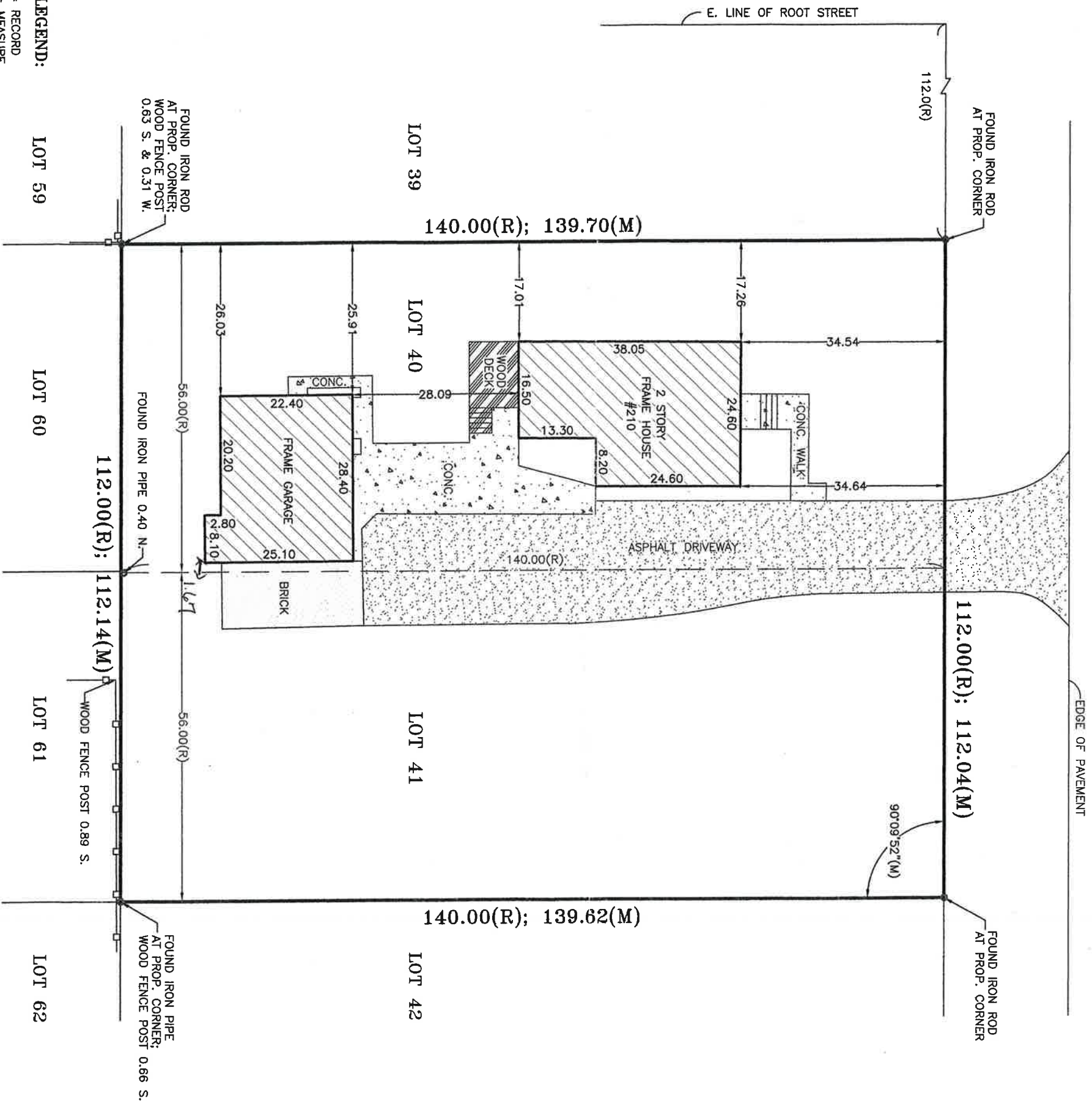
Tel. 815 485-0445
Fax 815 485-0528

studnicka2000@yahoo.com

17901 Haas Road
Mokena, Illinois 60448

LOT 40 AND 41 IN BROOKWOOD PARK, A SUBDIVISION OF PART OF THE WEST 1/2 OF SECTION 15, TOWNSHIP 35 NORTH, RANGE 11 EAST OF THE THIRD PRINCIPAL MERIDIAN, ACCORDING TO THE PLAT THEREOF RECORDED APRIL 9, 1925, AS DOCUMENT NO. 378061, IN WILL COUNTY, ILLINOIS.

FIR STREET



LEGEND:
R= RECORD
M= MEASURE
□ = WOOD FENCE

Scale: 1" = 20 feet

Distances are marked in feet and decimals.

Ordered by: Sell Law Office

Order No.: 15-7-243

Compare all points before building by same and at once report any difference. For building lines, restrictions, or easements not shown hereon, refer to abstract, deed or ordinance.

Field work completed: 7/29/15

Drawn by: S.K.

Proofed by: T.S.

Design Firm Registration # 184-002791



STATE OF ILLINOIS }
COUNTY OF WILL } ss

Studnicka and Associates, Ltd., an Illinois Land Surveying Corporation does hereby certify that this professional service conforms to the current Illinois standards for boundary survey.

Mokena, IL, July 29, A.D. 2015

by

License No. 3304 Expires 11/30/16